

Project Completion, Commissioning & Start-Up

The PCCS Model

The PCCS Model sets the framework for the Who does What, Where, When and How for the entire Project. It is the governing Model for all the Project Completion, Commissioning & Start-Up activities. The Model also shows how PCCS is embedded in the Asset Life Cycle Chain and the mutual dependencies between the two. Each PCCS phase has specific Objectives with inputs and tangible deliverables which are described in a separate Project Completion, Commissioning & Start-Up Manual.

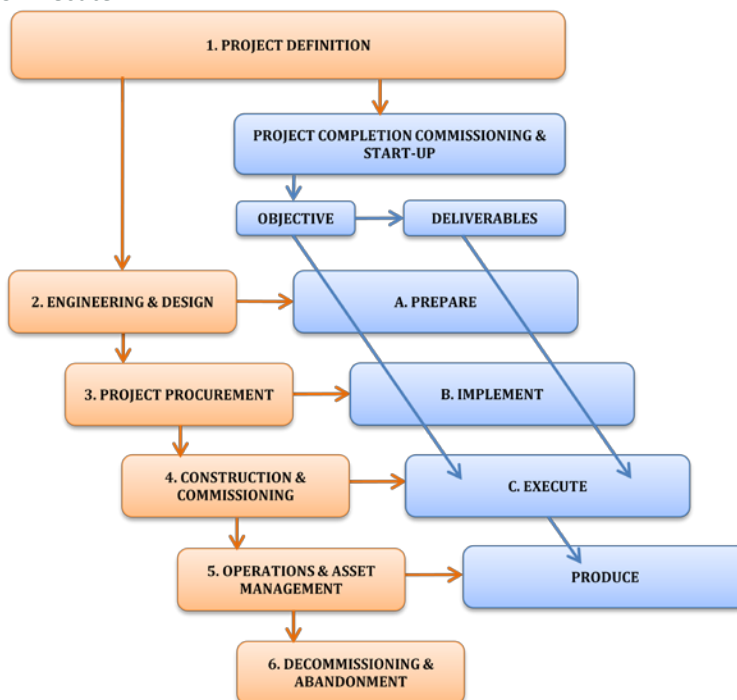
The first part: Asset Life Cycle Chain with the following steps

The PCCS Model consists of two parts.

1. Project Definition
2. Engineering & Design
3. Project Procurement
4. Construction & Commissioning
5. Operations & Asset Management
6. Decommissioning & Abandonment

The second part: Phases for Project Completion, Commissioning & Start-Up

- A. Prepare
- B. Implement
- C. Execute



The PCCS Approach

The prime purpose of Project Completion, Commissioning and Start-Up (PCCS) is to provide a systematic and structured approach recognizing key success and influencing factors for the successful completion of a Project.



The PCCS approach will not correct a poor design. However, it may identify design deficiencies in an early phase of the Project enabling the on time implementation of mitigating measures.

The PCCS approach for Project Completion, Commissioning and Start-Up

The prime purpose of Project Completion, Commissioning and Start-Up (PCCS) is to provide a systematic and structured approach recognizing key success and influencing factors for the successful completion of a Project. The PCCS approach covers many more aspects than “just Commissioning”. PCCS is an integrated approach taking into account all the aspects for Project Completion, Commissioning and Start-Up required for meeting challenging project targets and on-time first commercial delivery of product. The preparations for Project Completion, Commissioning and Start-Up should begin as early as possible, preferably during the Project Definition or the Engineering and Design phase. The PCCS approach describes the prevailing principles for the Preparation, Implementation and Execution of the activities as well as the HSE aspects that impact the execution of PCCS.

The overall goal of Project Completion, Commissioning and Start-Up is to:

- Provide the requirements and reference guidelines to prepare and execute Project Completion, Commissioning and Start-Up in order to ensure a standardized, auditable and timely implementation of relevant activities.
- Verify and document that Equipment and Systems within the contractual scope are designed and built to fulfill their respective functionality- and operability-requirements.
- Ensure that all equipment within the contractual scope is handled such that Project Completion, Commissioning and Start-Up activities can be executed safely.

The Key Success Factors of the PCCS approach:

- Integrated focus on PCCS rather than on “Just Commissioning”
- Recognition of the HSE aspects of the Project
- Early involvement of the PCCS Team in the Project
- Solid integrated organization structure Client and Versatec
- Competent and experienced PCCS team members
- Defined roles and responsibilities
- Solid communication and reporting structure
- Readily accessible documentation using Radial SG Viewport[®]
- Proper scheduling and preparing the PCCS activities

The Key Advantages of the PCCS approach:

- Quality Assurance
- Compliance Assurance
- Operational Assurance
- HSE Assurance
- On-time Delivery
- Cost Saving

*Let Our Expertise Power
Your Project*

Check our **Product Information Sheets** for BRZO, BowTies, ARIE, Explosie-veiligheid, HAZIDS, HAZOPs and more.



Contact:
Versatec Energy B.V.
Korenmolenlaan 4
3447 GG Woerden
Tel: +31 348 437 460
Fax: +31 348 437 461
Email: info@versatec.nl
Website: www.versatec.nl